



# TOWN RENTALS



01323 417700



1 Bedroom

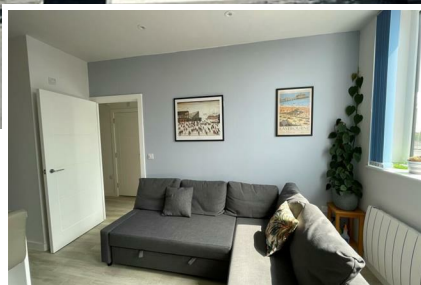
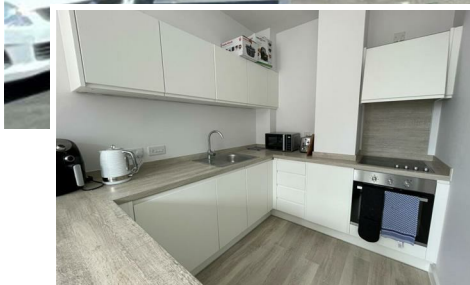
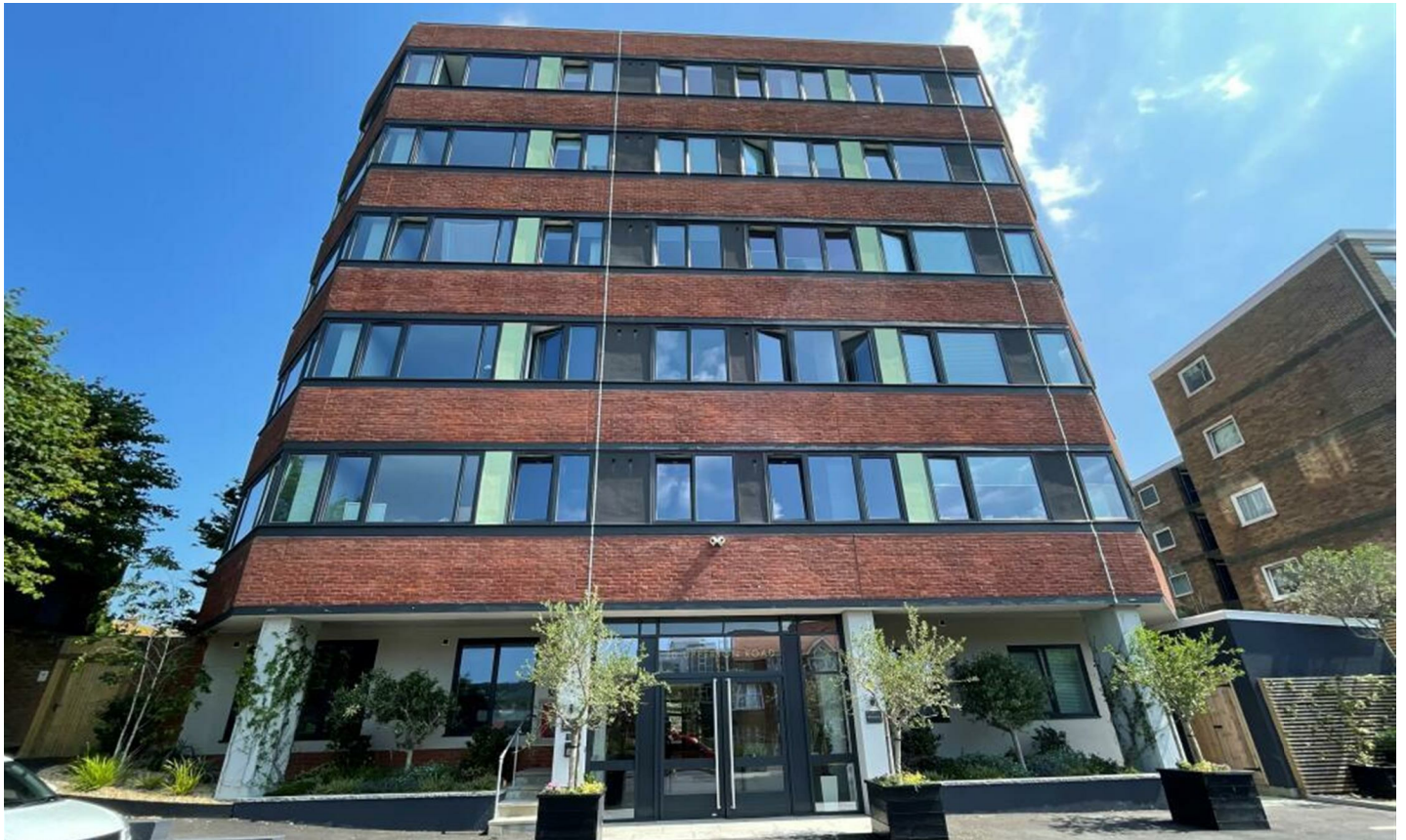


1 Reception



1 Bathroom

## £900 PCM



## 20 Upperton Road, Eastbourne BN21 1AG

Town Rentals are delighted to offer this extremely well presented, modern, one bedroom flat situated close to Eastbourne's Town Centre and mainline railway station. This property has been finished to a high standard including a open plan modern kitchen and living room, modern bathroom, double bedroom and double glazing. The Upperton offers two passenger lifts and a stunning entrance lobby. Local amenities and bus routes are just a short walk away.

Main Features

- One Bedroom Flat
- Passenger Lift
- Fourth Floor
- Modern Kitchen
- Modern Bathroom
- HOLDING DEPOSIT: £207
- TENANCY DEPOSIT: £1038
- COUNCIL TAX BAND: A
- 12 MONTH INITIAL TENANCY TERM
- EPC: C

Hallway

With LVT flooring, entry phone system, cupboard housing washer/dryer, storage cupboard and doors to -

Open Plan Living Room

17'5" x 9'7" (5.31 x 2.94)  
With LVT flooring, heater, ceiling spotlights, large window to side aspect with far reaching views and open to -

Kitchen Area

With LVT flooring, a range of wall and base units, single drainer sink with mixer tap, electric oven and hob, concealed cooker hood, integrated under counter fridge and breakfast bar.

Bedroom

9'0" x 8'8" (2.76 x 2.65)  
With LVT flooring, heater, TV and telephone point and window to side aspect with far reaching views.

Bathroom

With tiled flooring, part tiled walls, basin with mixer tap, low level WC, bath with mixer tap and wall mounted shower attachment and heated towel rail.

Other Information

**\*\***Whilst we make every effort to ensure these details are accurate, we are unable to check telephone and TV connection points, inspect loft access or check the working condition of appliances. To a large extent we do rely on the information provided by the landlord. Contractual obligations may require the rent, holding deposit and tenancy deposit to differ in price than what is outlined above**\*\***

